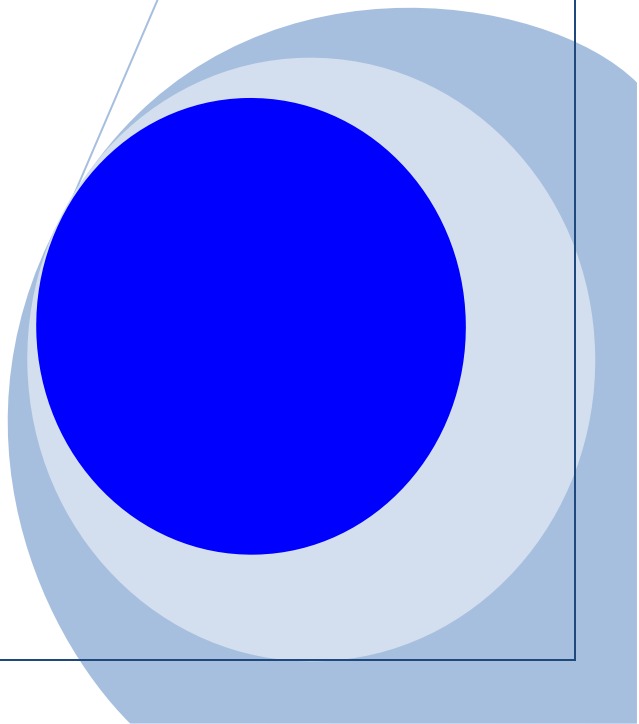
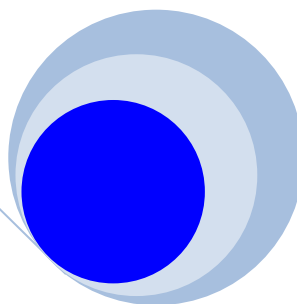
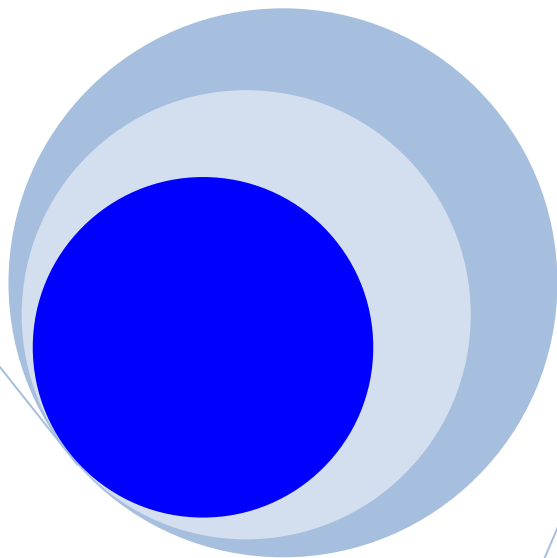


EVOLUTION

A Points4Golf System

MILL HILL GOLF CLUB
100 BARNET WAY
LONDON NW7 3HL

By: Mill Hill Golf Club Marketing
Telephone: 0208 959 2339 #2



EVOLUTION

Flexible Membership at Mill Hill Golf Club

Mill Hill Golf Club now offers the 'Evolution' membership which is tailor made to suit your life style, providing a totally modern low cost approach to playing golf at a Private Members Club.

Designed for the off peak or fair-weather golfer, it ensures the optimum use of subscriptions. The scheme is fair and cost effective giving you the option of fitting golf membership into your way of life without the cost of being a full 7 day member.

You receive 400 points that can be exchanged for the following:



weekend round before 12pm

32 points



weekend round after 12pm

22 points



weekday round before 12pm

20 points



weekday round after 12pm

15 points



Twilight or anytime Monday round

12 points

The management reserve the right to increase the points per round
by a maximum of 10% in any one calendar year.

The bottom line is, you can play up-to a maximum of 36 rounds of golf per year, take part in competitions and acquire a handicap certificate.

You may, at any time, become a 'Full Member' by paying the balance of the full membership on a pro-rata basis. Any unused credits will be taken into account.

Frequently Asked Questions

How do I book a tee time?

Use the online booking system up to 4 days in advance at weekends and 7 days midweek.

Do I need to book a tee time?

Yes you do. You must always book a tee time before play and check in to the pro shop before play. Evo members can book 4 days ahead for weekends and 7 days ahead for weekdays.

Can I play in competitions?

You may play in club competitions for handicap purposes only and are therefore not eligible to win trophies/prizes; you are eligible to win the sweepstake and 2's sweep.

After booking on-line, do I have to report to the Pro Shop?

Yes you do to collect your Evo ticket before play.

Will I have a membership bag tag?

Yes you will which has to be always visible on your golf bag.

Can I sign in a guest; is there a limit to the number of times?

No you cannot. You can bring friends to play with you who will be charged at the visitor green fee of the day rather than a discounted guest fee.

Can I be signed in as a member's guest?

No you cannot.

What do I do if I run out of credit?

You may re-join the scheme again and your year will start from the date of re-joining.

Will my access to the club website be restricted?

You will have full use of the club website, booking system and electronic newsletters while you are an Evolution member of the club.

Will I be able to attend social events bringing family and friends?

Yes you can.

Do all my credits have to be used within 12 months, or can it roll over?

They must be used within one year from the date of joining and cannot be rolled over.

Can I represent the golf club in club matches?

No sorry, only full members can represent the club.

Can I convert to a full 5- or 7-day membership at any time?

Yes. The value of your points left on your account will be taken off the pro rata balance of a 5 or 7 day membership fee, but there is a change-over fee of £25.

I didn't play at all; can I carry forward all 400 credits to the following year?

Sorry no you cannot.

Can I use the reciprocal arrangements you have with other clubs?

No you cannot. Only full members can use reciprocals.

If you would like to apply for the Evolution membership package, please download a membership application form from our website, complete and send to cluboffice@millhillgc.co.uk together with a selfie for your membership card.

Once you have paid the membership fee, your bag tag and membership card can be collected from the Pro Shop.

Note: Any Evolution member who plays without booking in and debiting their points, will have their membership terminated.